
Newsletter



August 2025



YOUR COMMITTEE

Office Bearers

President	Rhonda Cheesman	0408 388 066
Vice President	Brian Arter	9874 1432
Secretary	Liz Bruhn	0410 258 944
Treasurer/Chief instructor	Tamara Taylor	0407 096 261

General Committee

Anne Smith, Andrea Sciberras, Dodo Kelly, Debra Conway

Instructors

Tamara Taylor, Martin Rowledge, Rhonda Cheesman, Liz Bruhn, Brian Arter, Dodo Kelly, Susan Poyner, Debra Conway, Miranda Watkins, Matt Elder

Email esodcmitcham@gmail.com

Website www.esodc.org.au

Facebook [Eastern Suburbs Obedience Dog Club](#)

INTRODUCTION

Our Club was founded in 1969 to cater for those owners of purebred dogs who were interested in training their dogs to Obedience Trial standard. The club was so successful in this regard that it was granted

affiliation with KCC (Kennel Control Council). In 1979 Victorian Canine Association (now Dogs Victoria) accepted all dogs into Obedience trials and the club was then also opened to all dogs.

CLUB RULES

1. Your dog is to be kept on leash at all times. The only exception is when given explicit instruction to work off lead in class.
2. Handlers wishing to leave their dogs tethered on Club grounds should only do so if their dogs are safe with people, especially around children. No dog may be tethered when it can reach another dog.
3. Dogs must be fully immunised before coming to classes which needs to be kept up-to-date.
4. Any sick dog, or one suffering from a communicative illness, are not to come to classes until Vet cleared.
5. Handlers are responsible for removal of their dogs' excreta from the training area.
6. We teach rewards-based training. Physical and excessive verbal abuse of dogs is not allowed. Any observed behaviour of this type will lead to expulsion from the club.
7. Instructors have authority over their classes and may ask a member to take their dog out of class if it is overly disruptive.
8. While at the grounds, before and after classes, please remain in control of your dogs, and respect the space of other dogs and handlers.
9. Dogs in season should not attend training for four weeks. However, this does not mean you should stop attending classes nor cease the training of your dog.
10. If an Instructor considers your dog to be aggressive, the Chief Instructor will evaluate your dog as to its suitability to be trained at ESODC. If required, the dog may be asked to wear a muzzle while at training or private professional instruction / organisations may be recommended. Remember, we are a Community Dog Club, we do not offer specialised behavioural modification training.

President's Report

How is it August already? Welcome to our 'winter's nearly over' newsletter, and although it's been a freezing cold winter, I do appreciate that we have been blessed with rain-free windows most Sunday mornings. The warm sunshine is making a regular appearance too as we edge closer to Spring. Congratulations to every single one of you, braving the cold and rocking up to another class. You are amazing, and make our jobs as Instructors so much more rewarding.

A warm and special welcome to all our new members. I trust you have settled in to your new Sunday morning routines, and more importantly.... are finding the time each and every day for a quick homework/training session with your beloved furball. Remember to keep each session short and sweet, make it fun, and finish up every session with a successful outcome.

Looking ahead... our annual Obedience and Rally Trials are now just two months away. There are NO classes on October 5th as we will be hosting competitors (dogs and handlers) from all over the state. Of course, we will need help on the day to set up all the rings and relevant equipment; set up, cook, and attend the bbq; and help out with the judges/stewards catering in the clubrooms. If you feel you would like to help out for an hour (or two), please drop in to the clubrooms and let us know.



There are loads of little jobs, and many hands make light work...right? On the day of the trial, I highly encourage ALL club members to come down (without your dogs) and wander around the grounds for a while, observing the noisy and busy world of obedience (and rally) competition. Be inspired.... that could be you competing too, sometime soon! Again, NO classes October 5th. But, help on the day would be hugely appreciated.

Today, I also wish to acknowledge all our hard working and generous instructors, committee, grounds keepers, and on-field and off-field helpers. Their time, support and dedication to our club is extremely generous and hugely appreciated, and our club could not exist without it. Thanks again to all our support team, you know who you are..... and we are truly grateful.

Lastly, thank you everyone for your commitment to dog handling/training. It is lovely seeing you all scattered across the field every Sunday, all working your dogs in the various classes. Keep up your good work, stay warm, stay dry, and have fun with your dogs.

Happy training,
Rhonda Cheesman



CLUB DATES FOR 2025

Date	Event
8/3 (Labour day Weekend)	No classes
20/4 (Easter Weekend)	No classes
8/9 (Kings Birthday Weekend)	Fun Day (to be confirmed)
5/10	Club Obedience Trial, no classes
30/11	Last formal class of the year
7/12	Fun Day and AGM

Welcome to our New Members

June

Owner	Dog	Breed
Trevor	Greg	Labrador
Aris	Rory	Ridgeback Mix
Arthur	George	Staffy
Dennis	Luna	Jack Russell x Fox Terrier
Adrian	Boston	Boxer
Kate	Darcy	CKCS
Chloe	Finn	Cavoodle
Campbell	Louie	Groodle

July

Owner	Dog	Breed
Dan	Rhubarb	Rhodesian Ridgeback
Andre	Bear	Belgian Shepherd Tervueren
Edward	Freddie	American staff x GSPx poodle
	Mowgli	Jack Russel Terrier
Natalia	Bailey	Cavoodle
Lynette	Poppy	Cavalier King Charles Spaniel
	Jackie	Cavalier King Charles Spaniel
Mindy	Cocoe	West highland terrier

Training News and Tips

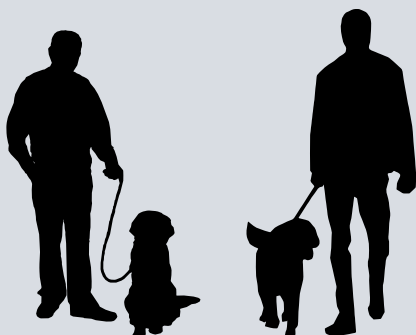
There is always so much happening on the grounds and within our club and the last couple of months have been no exception. We commenced our Instructors Training Course in the middle of July and the participants are really enjoying broadening their knowledge and understanding of animal psychology and training theories. Next, we will explore how to teach the many exercises that make up basic dog training. Later in the year you may see our new trainee instructors on the grounds starting to lead small portions of classes.

Training tip – Learned Irrelevance

Ever wondered why your instructor says “One cue only. Do not repeat your cue word”?

It’s not just a quirky rule – it’s rooted in how dogs learn.

When we repeat a word over and over, it becomes background noise. We talk constantly, so dogs naturally learn to tune us out. For example, if you are luring your dog into a down position and saying “down, down, down, down, down, down” as they follow the lure, what is your dog actually paying attention to? The lure and how to get it – not your words.



In this case, the word “down” isn’t connected with any specific action yet because they are still developing the behaviour. Instead, the dog learns to ignore the words. This is called learned irrelevance – the dog has learned that your word doesn’t matter.

By repeating cues before the dog understands the behaviour or action, you not only weaken the cue, but you also slow the learning process. That’s why we emphasize: Say the cue once, and only when your dog clearly understands what is expected.

Remember, to avoid learned irrelevance, teach the action until the dog demonstrates consistent accuracy and reliability, then add the cue word.

If you have any questions, please let us know. You can reach out to anyone wearing an ESODC t-shirt or jacket, drop us an email or send us a message on Facebook.

Tamara Taylor (Chief Instructor)

Meet the Instructors - Sue Poyner

Can you introduce yourself (and your dog) to us?

Hi, I'm Susan (Sue) Poyner. I grew up in Lilydale and now live in North Ringwood. I work as a Change Manager in the Aged care sector, where training remains a key part of my role.

My background includes competing in and teaching horse riding, and I've volunteered at major equestrian events, including the Sydney 2000 Olympics. I share my home with my adorable and cheeky cavoodle Paris, 3.5-years-old and Tigga, a 13-year-old ginger moggy. Surprisingly they're similar in size and colour—though Tigga's clearly the boss! And yes, before you say it, Paris and I look alike and I'm okay with that cause she's cute.

What brought you to the club and how long have you been with us?

I have a few friends in Mitcham who previously attended ESODC with their dogs. I was determined to have a well-behaved dog I could take anywhere—and who others would enjoy being around. Through life, I've always believed in the saying, "Start the way you want to finish," so I joined ESODC in early 2021 and 3.5 years later, I'm still here and still learning. A big drawcard for me was that ESODC is a not-for-profit, volunteer-run community organisation

What do you love about being an instructor and part of the club?

Becoming an instructor was never my plan. I joined the instructor training course simply to improve my own dog's training, but with the club growing and needing more instructors, I was encouraged to give it a try.



I was nervous and unsure at first, but I began by shadowing Tamara, assisting with her classes and helping those with more exuberant dogs. I then started filling in when instructors were away competing or on holidays.

Since May, I've been leading an Intermediate class to practise and develop my skills. I still have a lot to learn—each dog and handler pair teaches me something new and challenges me to improve how I teach. I really enjoy learning, being part of a supportive community, and meeting like-minded people who show up every Sunday morning with the same goal: to raise a well-behaved dog. Recently I started competing with Paris in Rally and Obedience and feel this will make me a better trainer.

If you could give your beginning training self one bit of advice what would it be?

Don't be too hard on yourself or get frustrated if your dog doesn't seem to get it during class. If you show up each week, do your best, and practise consistently at home, it all starts to fall into place over time. I also found training became much easier once I stopped thinking like a human and started thinking like a dog—their logic is completely different!

Anything else you would like to share?

On my early morning and after-work walks, I meet many local dogs. I love encouraging new puppy owners to join ESODC and give their dogs the best start through training—no one wants to manage poor behaviour for a dog's lifetime! It's heartwarming to see the progress of puppies who join the club and later thrive at the park, after building great relationships with their owners and other dogs.



Social Class Activities

At ESODC we offer three optional classes for members to continue training beyond our Advanced level. Our Obedience and Rally classes are structured to provide the ring training and etiquette you need to compete in Obedience / Rally trials. We have an Obedience ring and a Rally ring set up every week to complement these classes.

Our 9am Social class however, is provided for handlers who have completed the Intermediate and Advanced level and would like to explore other skills. The social class is relaxed and structured to help handlers connect with their dogs, learn new skills and most importantly, to have fun.

We keep the classes a surprise. Some recent activities were:

- Walking our dogs around the nearby streets doing sits, stands, drops, plus figures of eight around bushes and lamp posts along the way.
- Numerous fun obstacle courses including food distractions left on a chair.
- We had a “Cafe” with handlers sitting/eating biscuits and pretend coffees while other handlers walked past.
- We have done ‘Post Games’, and gate etiquette.
- Recall only sessions.

We regularly incorporate Rally signs, and we’ve introduced Tricks and Scent work, too.

If you are interested in joining us in the social class, please chat to your instructor, or Dodo (Social class), or Tamara (Chief Instructor) for further information. If you have specific ideas for class content, we’re always open for your suggestions too.

Cheers,
Dodo

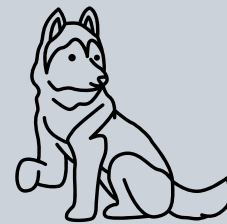


Farewell, Briar

Briar Sutherland joined ESODC in October 2011. Briar's contributions during the early years were truly vital and very much appreciated. She pitched in and helped when she could on-field as an instructor, as a general committee member, and hands on volunteer at our Fun Days and Trials.

It has also been our pleasure to regularly acknowledge Briar's own evolving skillset, and her dogs' sporting achievements, as she competed in a wide range of dog sports including Obedience, Rally, Sledding, Endurance, Back-packing and Sprint-dog.

In recent years, with ongoing changes within our club, and Briar's increasing work and sporting commitments, Briar chose to focus more of her available time towards her sporting endeavors. Now, as she steps away from ESODC altogether, we thank Briar for all her contributions over the years, and wish her every success in her future pursuits.



ESODC Obedience and Rally Trial October 5th

This is our big event of the year. For those newer to the club we run a formal Trial day and members from all over Victoria come and compete for titles.

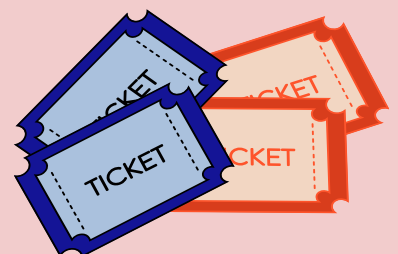
There will be no usual classes that day. After setting up the rings for the competitions we then have an amazing day watching dogs and their owners achieving great things, or doing what dogs do and having everything go pear shaped!



It does, of course take a lot of work and this is where we ask for your help and support. We will need to set up and the clear up on the day as well as running a sausage sizzle for the competitors and visitors and lunch for the Judges and Ring Stewards. If you feel you can donate some time to help on the day that would be very much appreciated!

We also run a raffle so any small donations of dog equipment or nice stuff for their humans would also be much appreciated. Of course Just turning up and enjoying the show would also be lovely.

Liz (Secretary)



Trial Round up

We've had some real achievements over the last two months!

Congratulations to every one of you

Huge congratulations to team Heidi and Dodo Kelly with great success in their 3 day Retrieving Trial in South Australia 07-9/6/25.

Completing her runs all three days, Heidi brought home a 2nd Place, a 3rd Place, two sashes and 2 bottles of wine. All in very trying wild, wet and extremely windy conditions. Well done Dodo and Heidi.

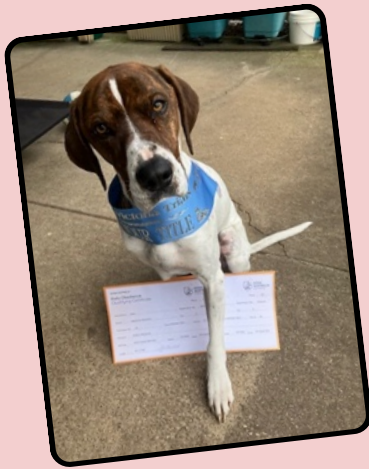


Heidi and Dodo are on fire! On June 16 they also achieved their Open Obedience title at Hastings Obedience Club. A first place in the morning with 192 points and a 3rd in the afternoon to gain her title. To gain three passes for a title in 3 attempts is an impressive achievement. Well done to both of you.

And another member successfully takes to trialling Congratulations Matt Elder and Aoife for your outstanding results in the Melbourne & District Dances with Dogs club Tricks Trial on 13/7/25. Competing over at Bulla, indoors and beneath the take-off flight path for all Melbourne Airport departures (just to offer some extra degrees of difficulty). Aoife scored an outstanding 55 1/2 (from total 60) for her six exercise routine in Trick Dog Starters. Huge effort team Matt and Aoife and we look forward to hearing more trial results sometime in the near future....



Trial Round up (cont)



Monica and Oska had a great day at the OTEC rally trial at KCC park on Sunday 3/8. Oska got passes in both the Morning and the afternoon Rally Advanced competitions giving him his Rally Advanced title. He is clearly very proud of his ribbon and both his pass cards! Well done both of you.

Spare Equipment

There is a collection of used but good condition leashes, car harnesses and magazines by the Club house available for any member to take. If you are in need of a longer or shorter leash for your dog or don't have a safety harness for your dog come and have a look.

If you have leads or collars your dog has outgrown and you are wanting to clear out a bit feel free to add them to the collection for others to use as well.



Instructor Training

Our current new Instructor training is going ahead full swing. Our Chief Instructor, Tamara, is doing an amazing job explaining all the details of how our canine friends think and how they show us what they are thinking. Some of our trainees are already instructing and some may instruct in the future, but they are all learning how to get more out of their relationship with their dog and the way they train them.



Vaccinations

Don't forget to have your dog vaccinated when the time comes around, to safe guard your dog while out and about, it is one of the requirements of the dog school so as soon as you have re-vaccinated your dog please show the vaccination card to your instructor.

To All Dog Owners

Please don't forget to carry a bag to pick up the poo when walking your dog. This is required by law. You are responsible for what your dog leaves behind and fines can be hefty if you are caught not cleaning up the mess



Blackdog
wear **10%**
DISCOUNT

www.blackdog.net.au

CODE: ESODC10



*T&C's - create account. Expires 30/12/2025. min spend \$15

Black Dog wear are based in Lilydale. They have kindly offered the club a discount on their products. They sell leads, harnesses and a variety of other items and will help fit them to your dog. Order online or in person and mention our club, and the code **ESODC10**
<https://www.blackdog.net.au/>



BM Animals is committed to providing you and your dog with high quality food and treats for optimum health and vitality. Locally sourced, chemical and preservative free, salt and sugar free, high quality food for your furry family member.

Products available:

- Raw meats
- Raw meaty bones (assorted cow, duck, emu, chicken, kangaroo, turkey, veal)
- Ready made meals (raw and cooked options)
- Treats and chews
- Supplements
- and more

Have a dog with a sensitive tummy or health issues? Chat with John or Maree and they will happily share their knowledge to help you and your dog.

Show your ESODC badge or this flyer to receive 10% off your purchase.

BM Animals
ph: 0488 144 675

1 McLellan Street, Bayswater
w: www.bmanimalscompletenutrition.net